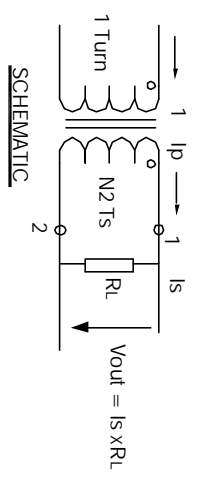


The information contained in this drawing is the sole property of CWS Coil Winding Specialist. Any reproduction in part or whole without written permission of CWS Coil Winding Specialist is prohibited.

REVISION HISTORY

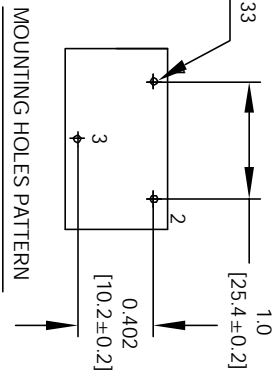
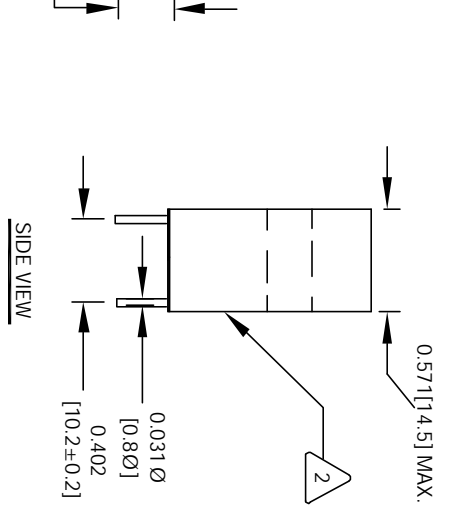
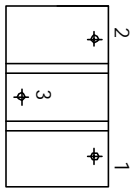
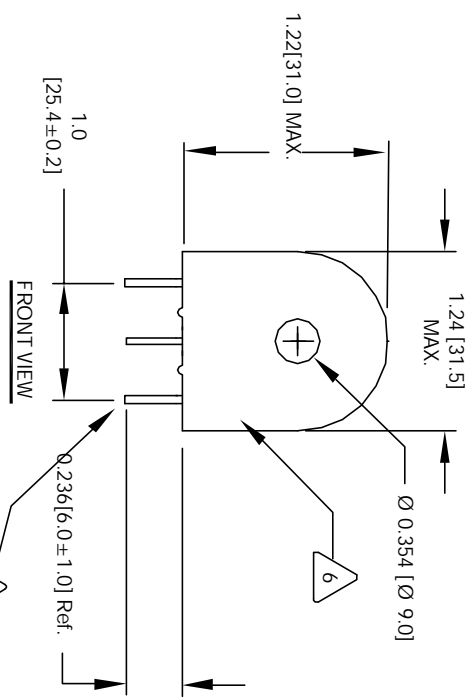
REV	ECN	DESCRIPTION	DATE	BY	CHK	DATE
A		PRODUCTION RELEASE	8/25/04	RPR	JLJU	8/25/04



- 6 MARK PART NUMBER AND REVISION
- 5 REMOVE INSULATION, SOLDERED TO LEADS
- 4 CONSTRUCTION: ENCAPSULATED USING BOBBIN.

OPERATING TEMP. = - 25 °C TO 125 °C
 OUTPUT VOLTAGE AT RL AND MAX (In) = 4.0 V RMS
 BURDEN RESISTOR (RL) = 100 OHMS
 DC RESISTANCE @ 25 °C = 50 OHMS MAX
 MAX AMPLITUDE ERROR WITHIN RANGE OF (In) = 5 %
 ACCURACY CLASS = ± 5 %
 = 100 AMPS RMS MAX.
 MAX AC PRIMARY CURRENT WITHOUT SATURATION (I max),
 = 40 AMPS RMS NOMINAL.
 PRIMARY CURRENT RANGE WITH DEFINED ERROR TOLERANCES (In),
 SPECIFICATIONS @ 25 °C :

- 2 WIRE: UL RECOGNIZED 130 °C RATED MAGNET WIRE
 CWS BYTEMARK OR OTHER APPROVED PART
 CORE: FERRITE TOROID
 - 1 BOBBIN RATING CLASS B (130 °C) REQUIRED
 MATERIAL: UL RECOGNIZED 94V-0 FOR FLAMMABILITY
- NOTES: UNLESS OTHERWISE SPECIFIED, CURRENT SENSOR,
 UNIT: INCHES [MM]



QTY	CODE	MFG. P/N	DESCRIPTION	ITEM NO.
	IDENT			
PARTS LIST				
	AUTOCAD	X		
	SOLIDWORKS			
	SIGN	DATE		
COLLWS.COM, INC CWS Coil Winding Specialist. 1510 E. Edinger Ave Unit B, Santa Ana, CA, 92705				
TITLE: Current Sense Transformer				
SIZE [DIM. IN] B				
SCALE 2=1				
CT-1603-ST				
SIZE [DIM. IN] B				
SCALE 2=1				
SHEET 1 OF 1				